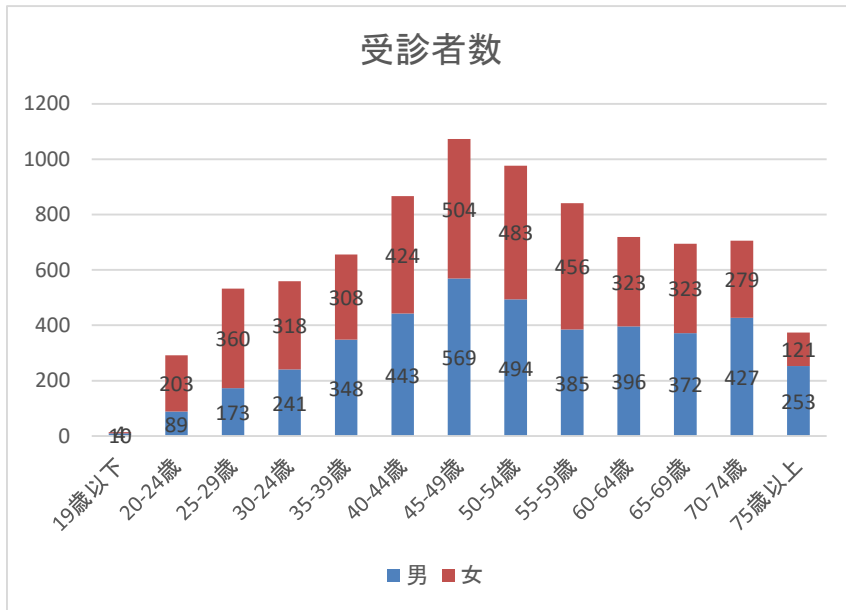


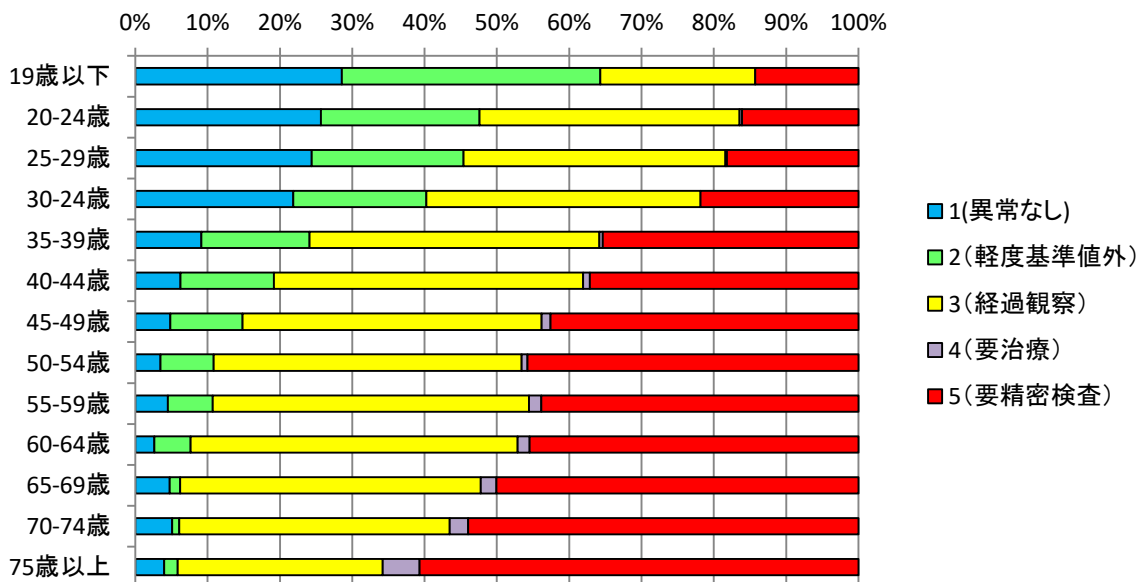
# 令和2年度 報告

## 当施設でのドック受診者数



	男	女	合計
19歳以下	10	4	14
20-24歳	89	203	292
25-29歳	173	360	533
30-34歳	241	318	559
35-39歳	348	308	656
40-44歳	443	424	867
45-49歳	569	504	1073
50-54歳	494	483	977
55-59歳	385	456	841
60-64歳	396	323	719
65-69歳	372	323	695
70-74歳	427	279	706
75歳以上	253	121	374
合計	4,200	4,106	8,306

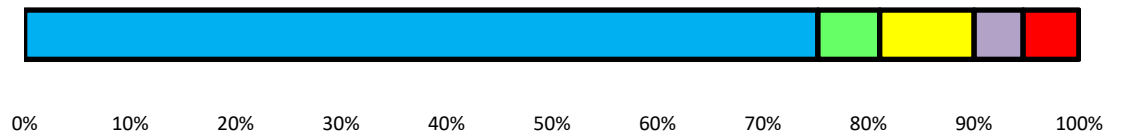
## 判定結果 年齢別



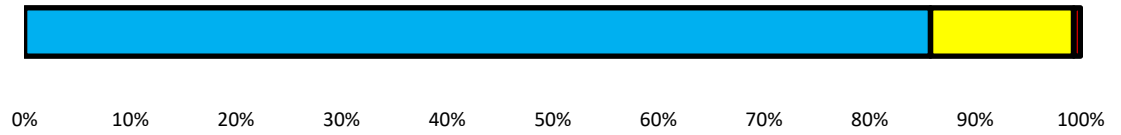
# 項目別判定グラフ

1(異常なし) 2(軽度基準値外) 3(経過観察) 4(要治療) 5(要精密検査)

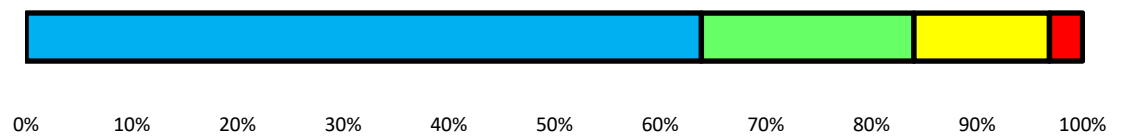
## ①眼科



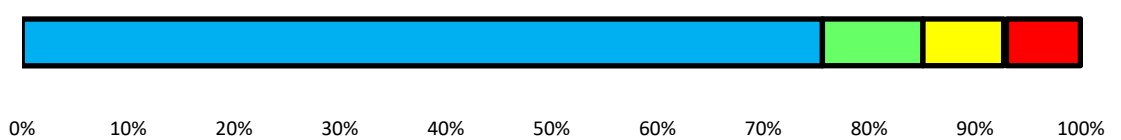
## ②聴力



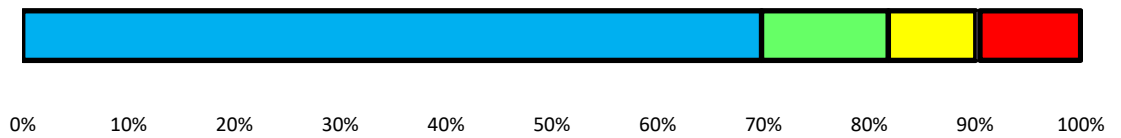
## ③血圧



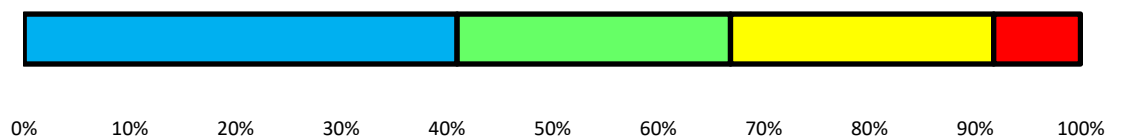
## ④末梢血液一般



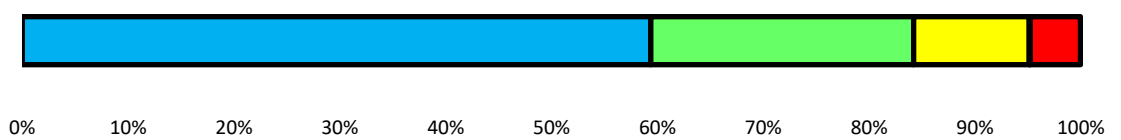
## ⑤肝機能



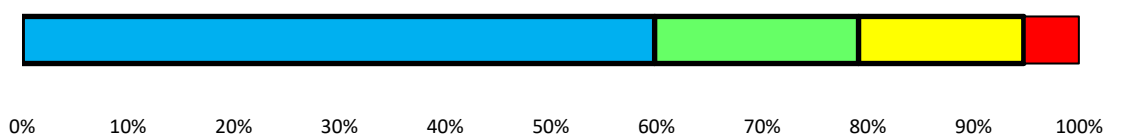
## ⑥脂質



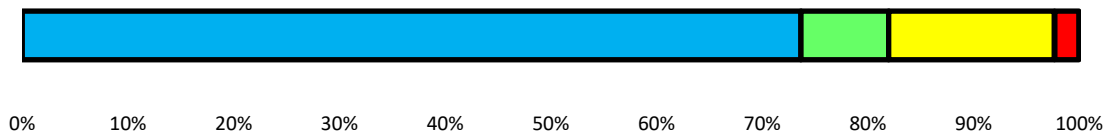
## ⑦代謝系



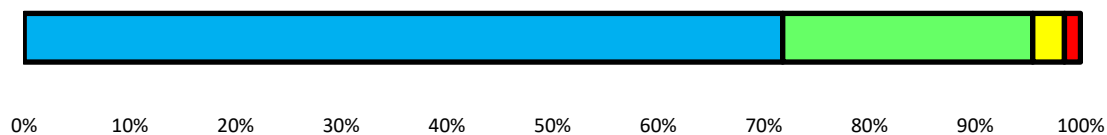
## ⑧腎・尿路



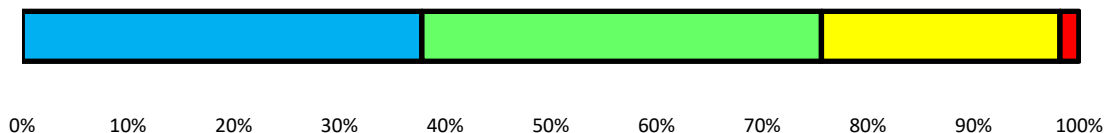
⑨心電図検査



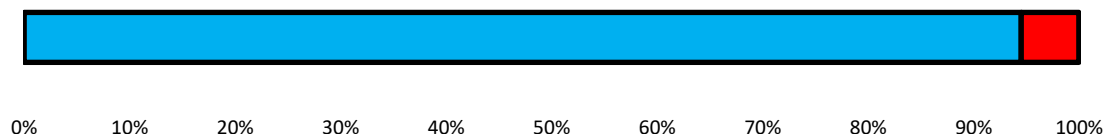
⑩胸部X線検査



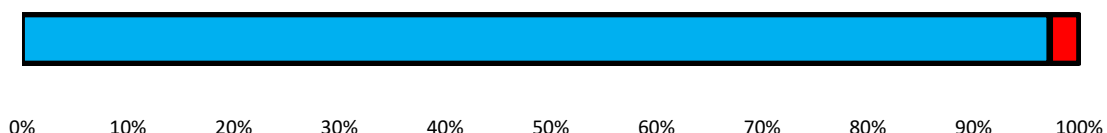
⑪胃部X線検査



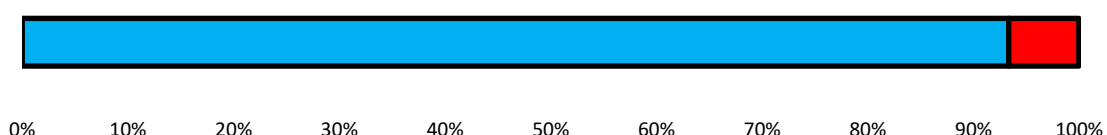
⑫大腸癌検査(便潜血反応)



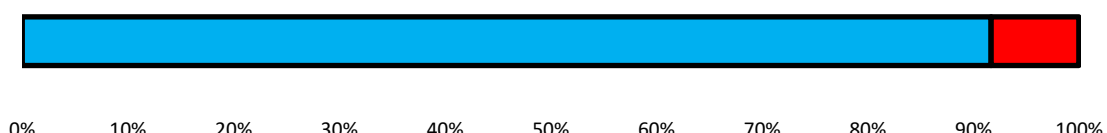
⑬子宮頸がん検査



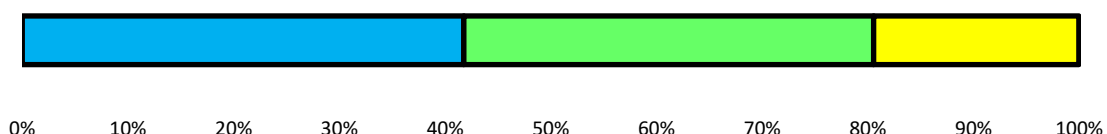
⑭乳がん検査



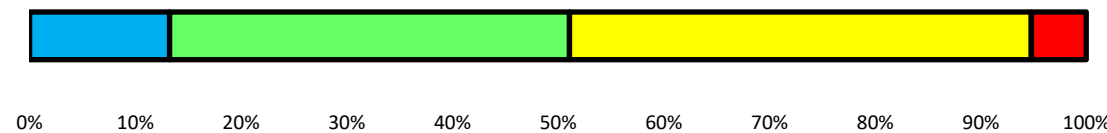
⑮前立腺癌検査



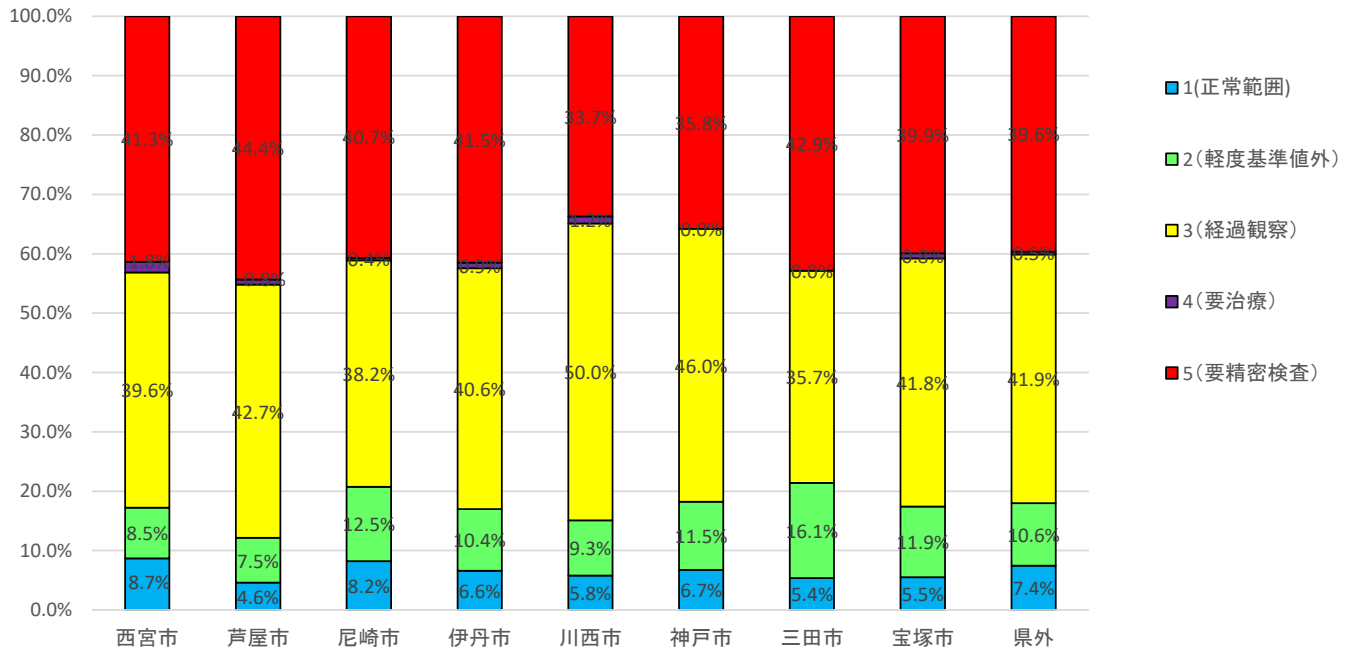
⑯骨粗鬆症検査



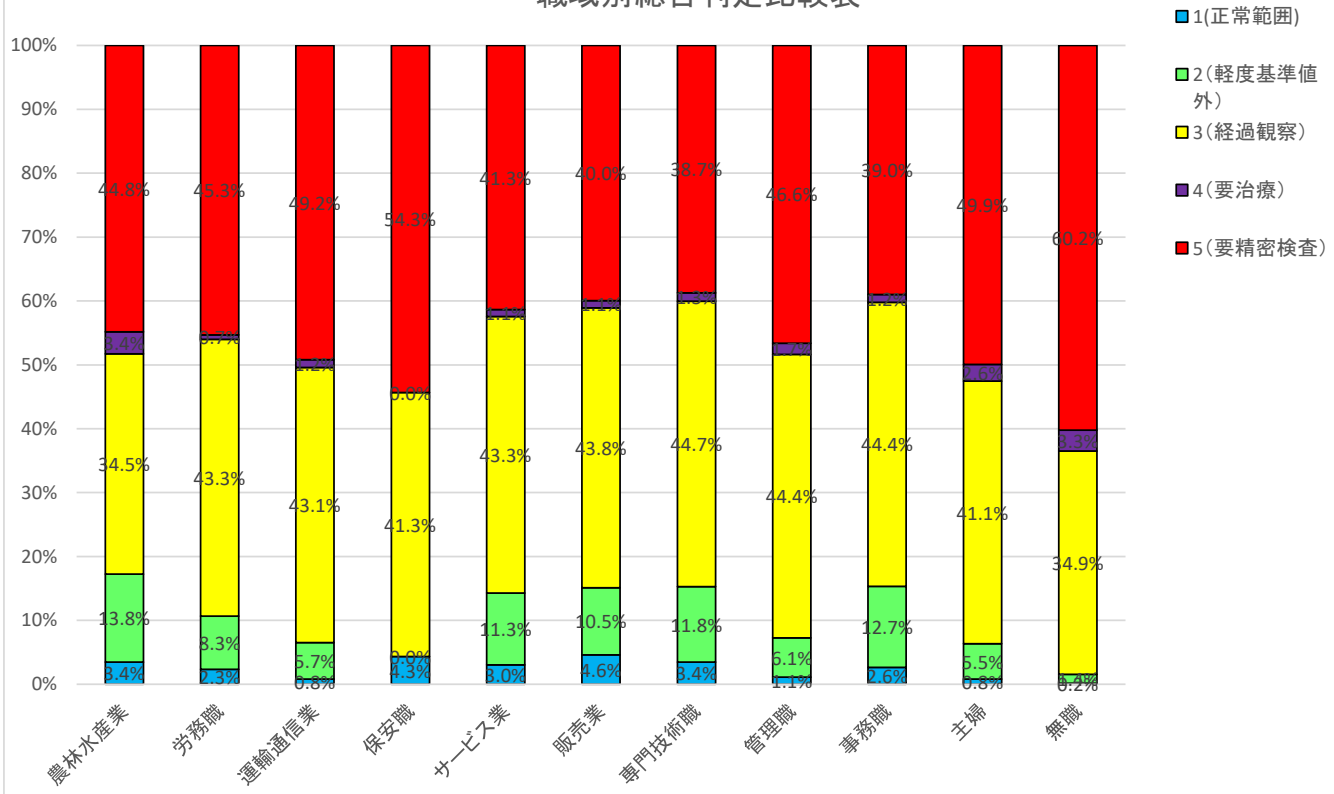
⑰腹部超音波検査



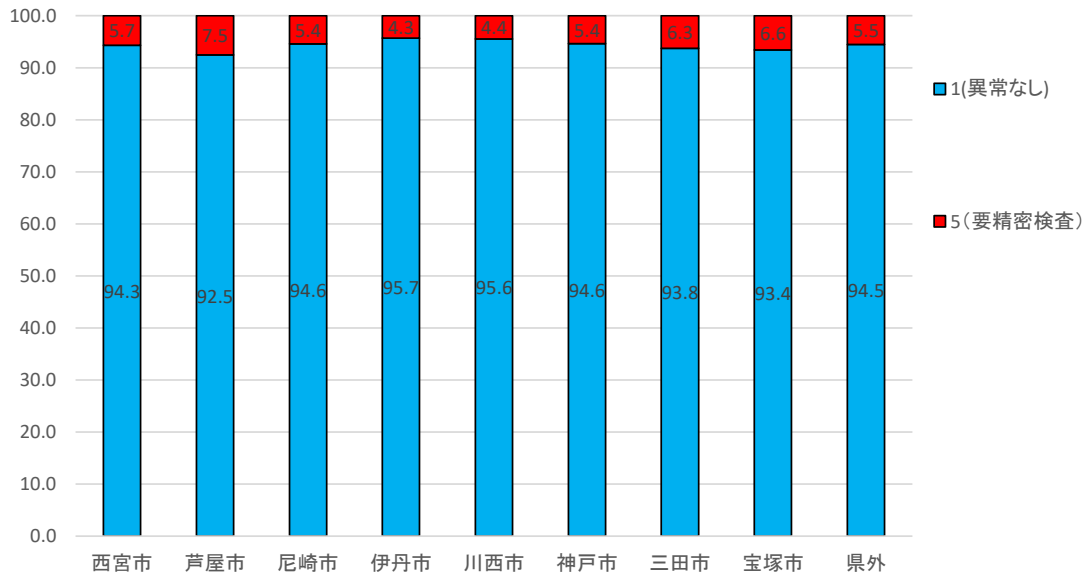
### 他市との総合判定比較



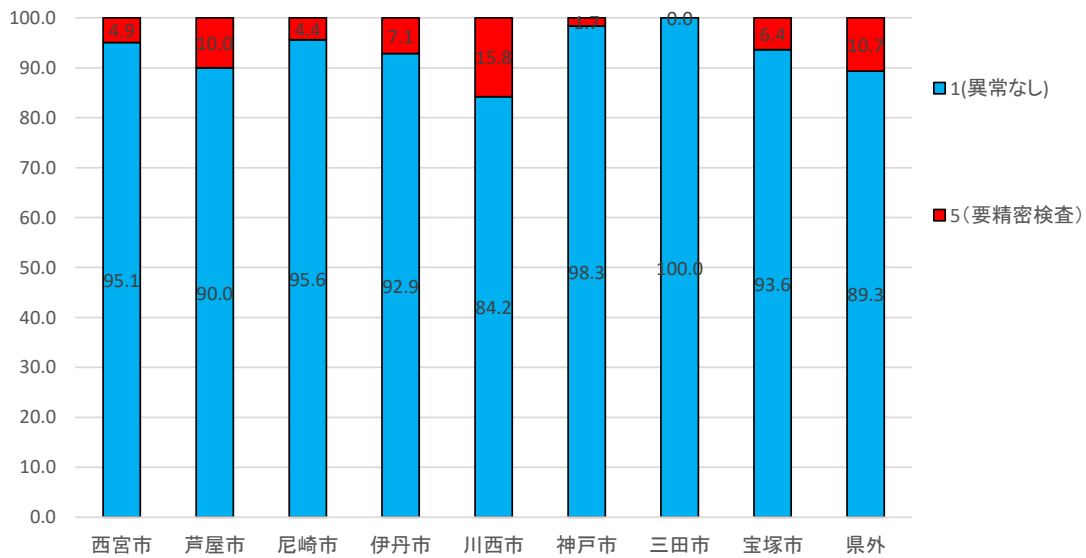
職域別総合判定比較表



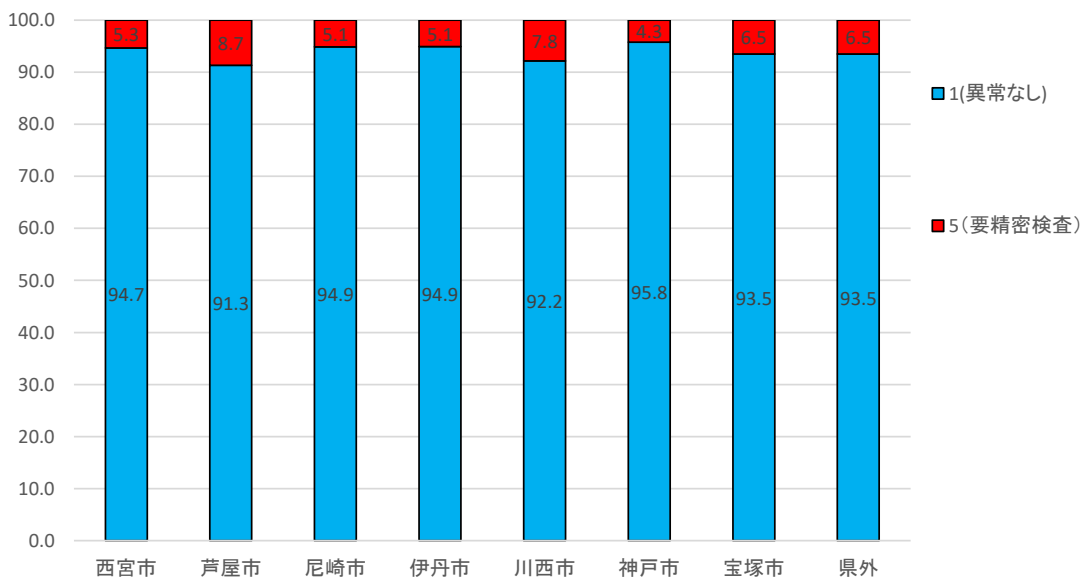
地域別便潜血反応判定比較表(男性)



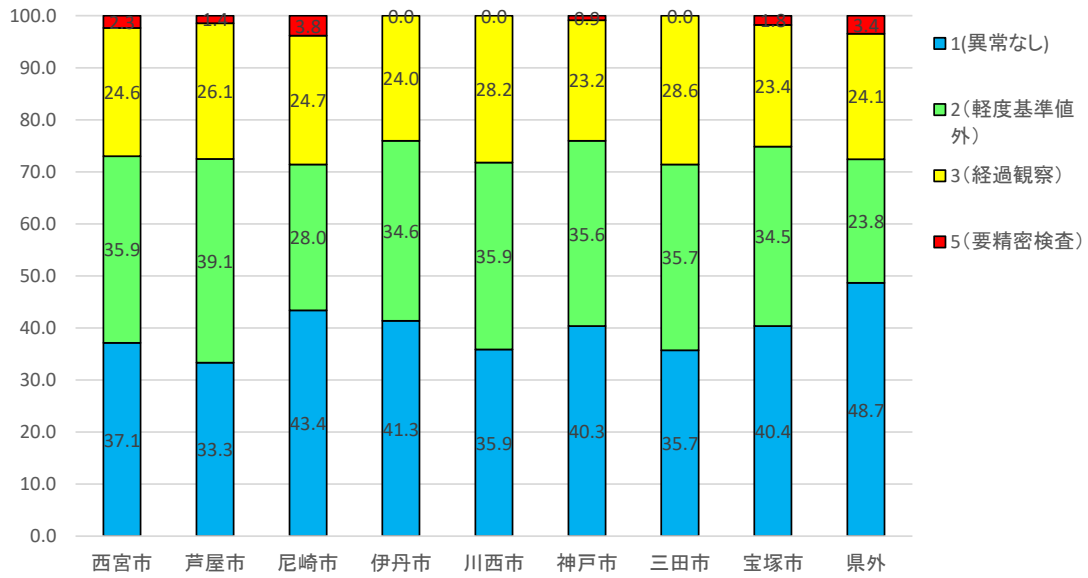
地域別便潜血反応判定比較表(女性)



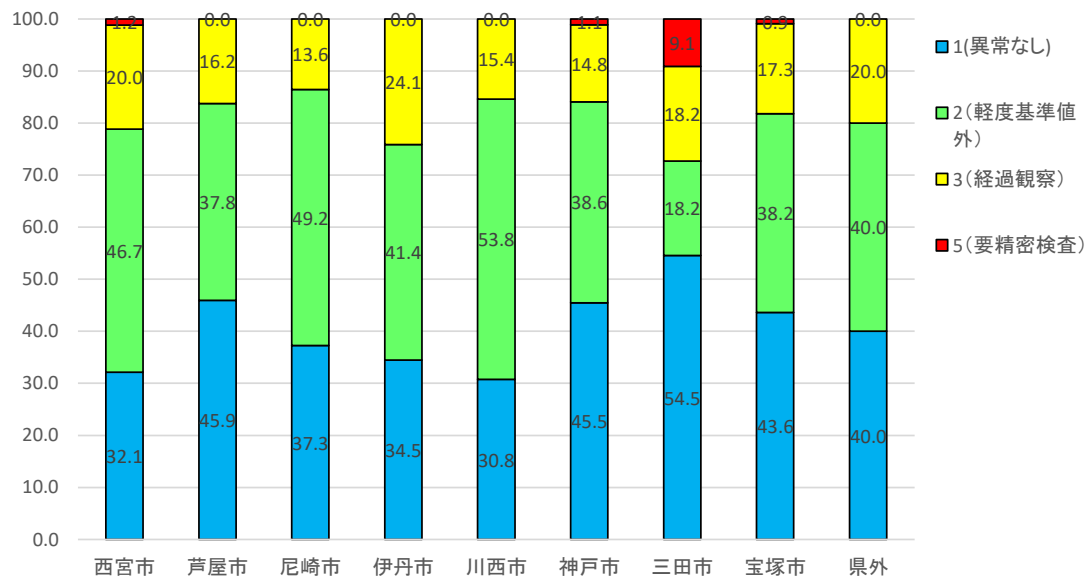
地域別便潜血反応判定比較表(全体)



地域別胃部X線判定比較表(男性)



地域別胃部X線判定比較表(女性)



地域別胃部X線判定比較表(全体)

