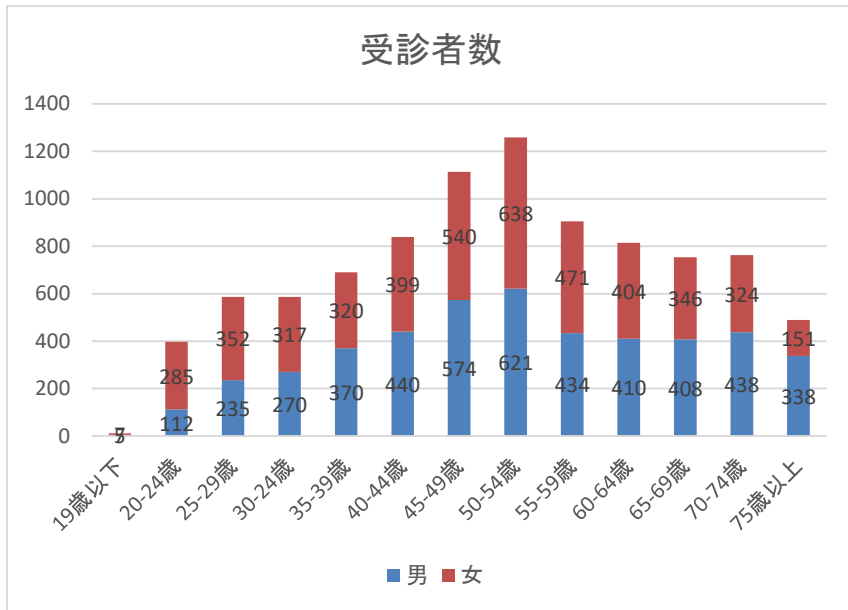


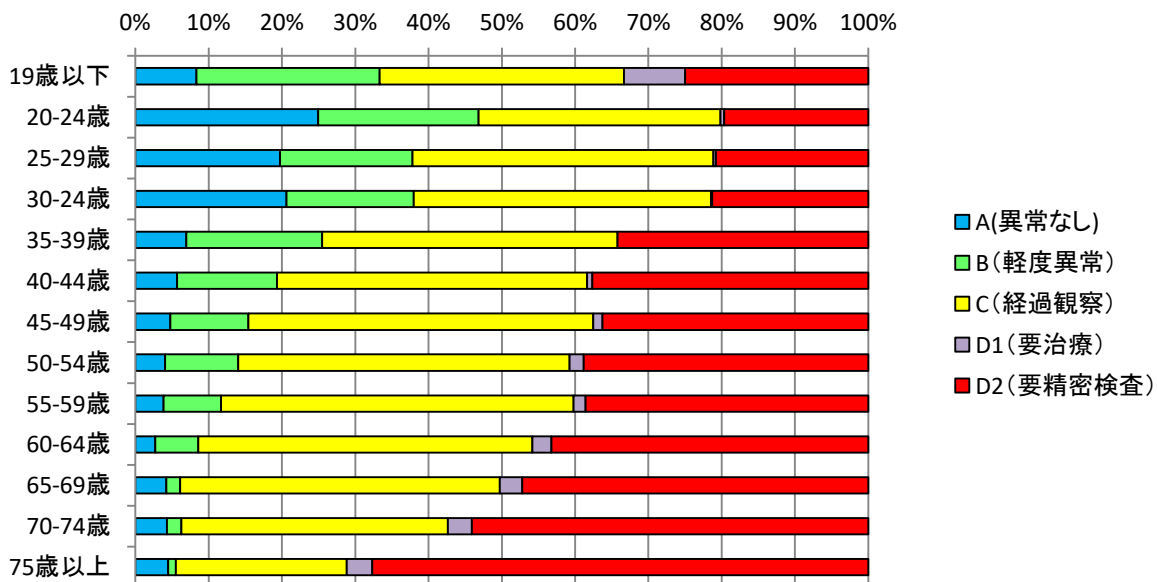
令和4年度 報告

当施設でのドック受診者数



	男	女	合計
19歳以下	5	7	12
20-24歳	112	285	397
25-29歳	235	352	587
30-34歳	270	317	587
35-39歳	370	320	690
40-44歳	440	399	839
45-49歳	574	540	1114
50-54歳	621	638	1259
55-59歳	434	471	905
60-64歳	410	404	814
65-69歳	408	346	754
70-74歳	438	324	762
75歳以上	338	151	489
合計	4,655	4,554	9,209

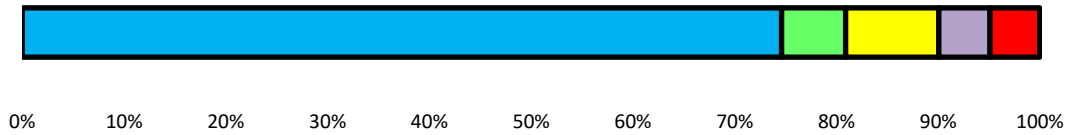
判定結果 年齢別



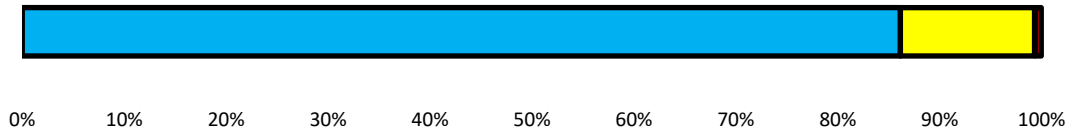
項目別判定グラフ

A(異常なし) B(軽度異常) C(経過観察) D1(要治療) D2(要精密検査)

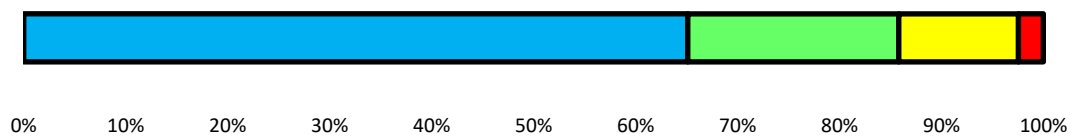
①眼科



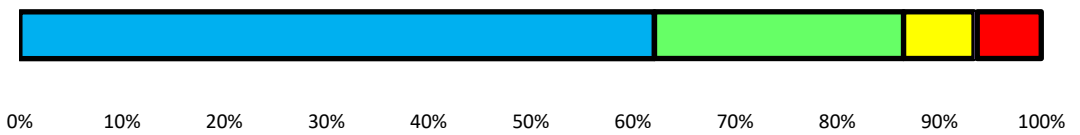
②聴力



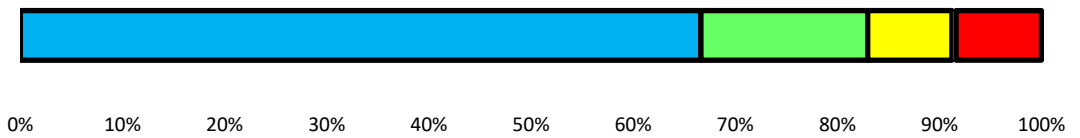
③血圧



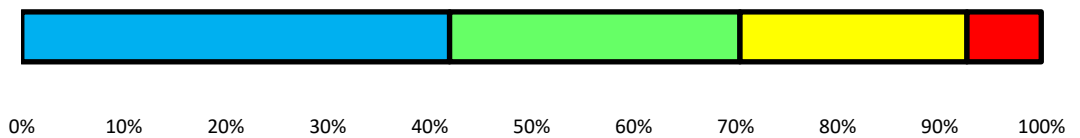
④末梢血液一般



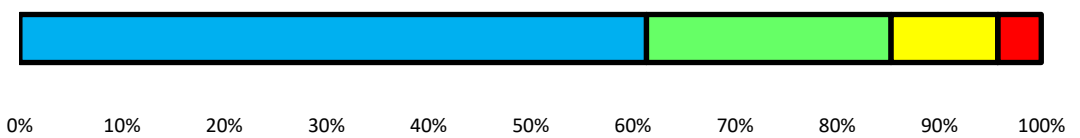
⑤肝機能



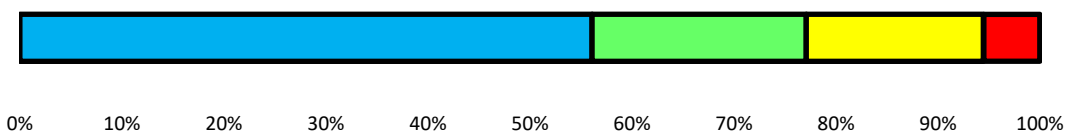
⑥脂質



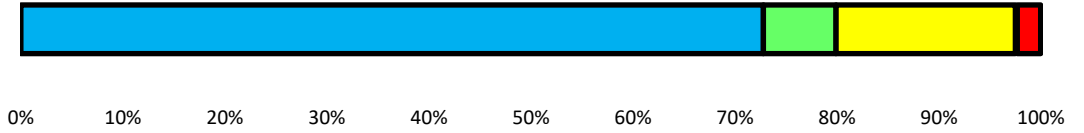
⑦代謝系



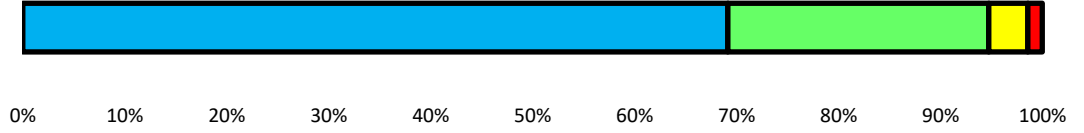
⑧腎・尿路



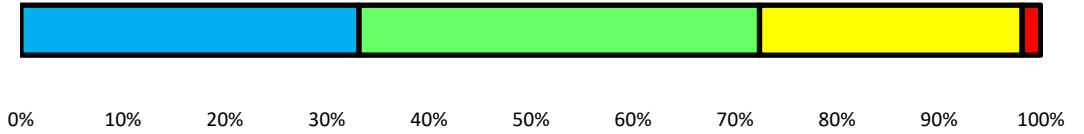
⑨心電図検査



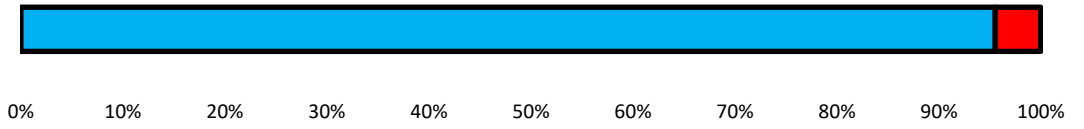
⑩胸部X線検査



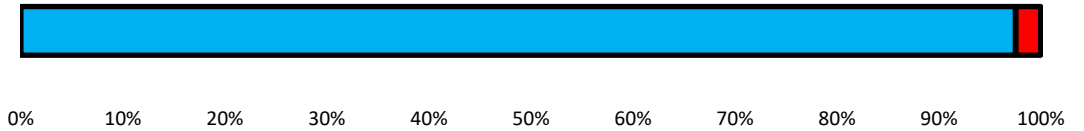
⑪胃部X線検査



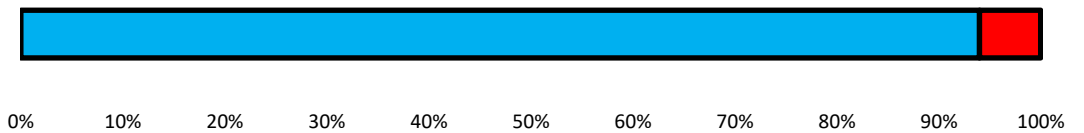
⑫大腸癌検査(便潜血反応)



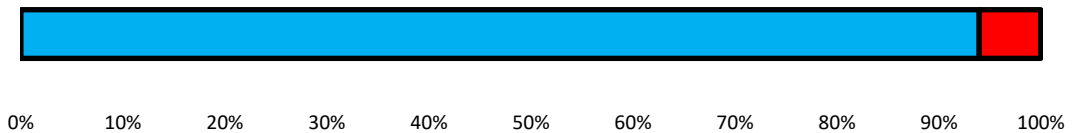
⑬子宮頸がん検査



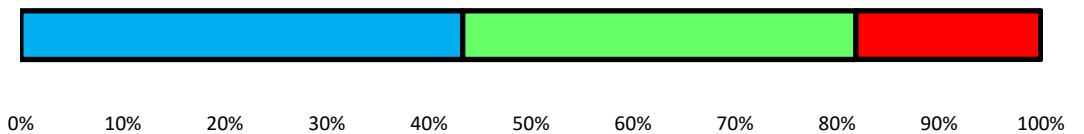
⑭乳がん検査



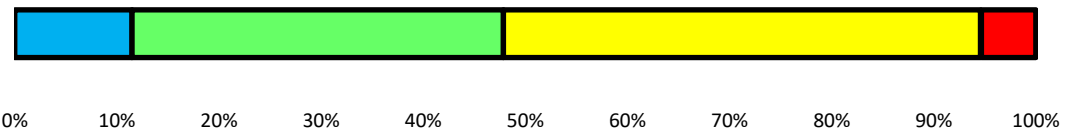
⑮前立腺癌検査



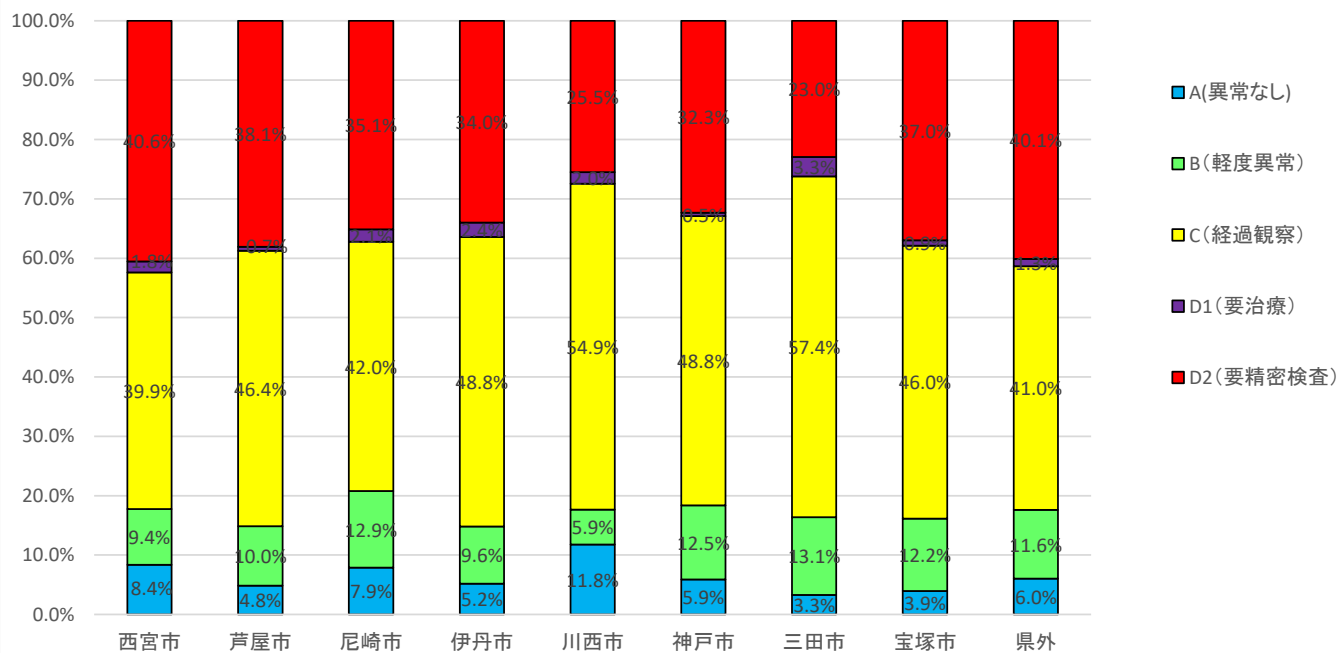
⑯骨粗鬆症検査



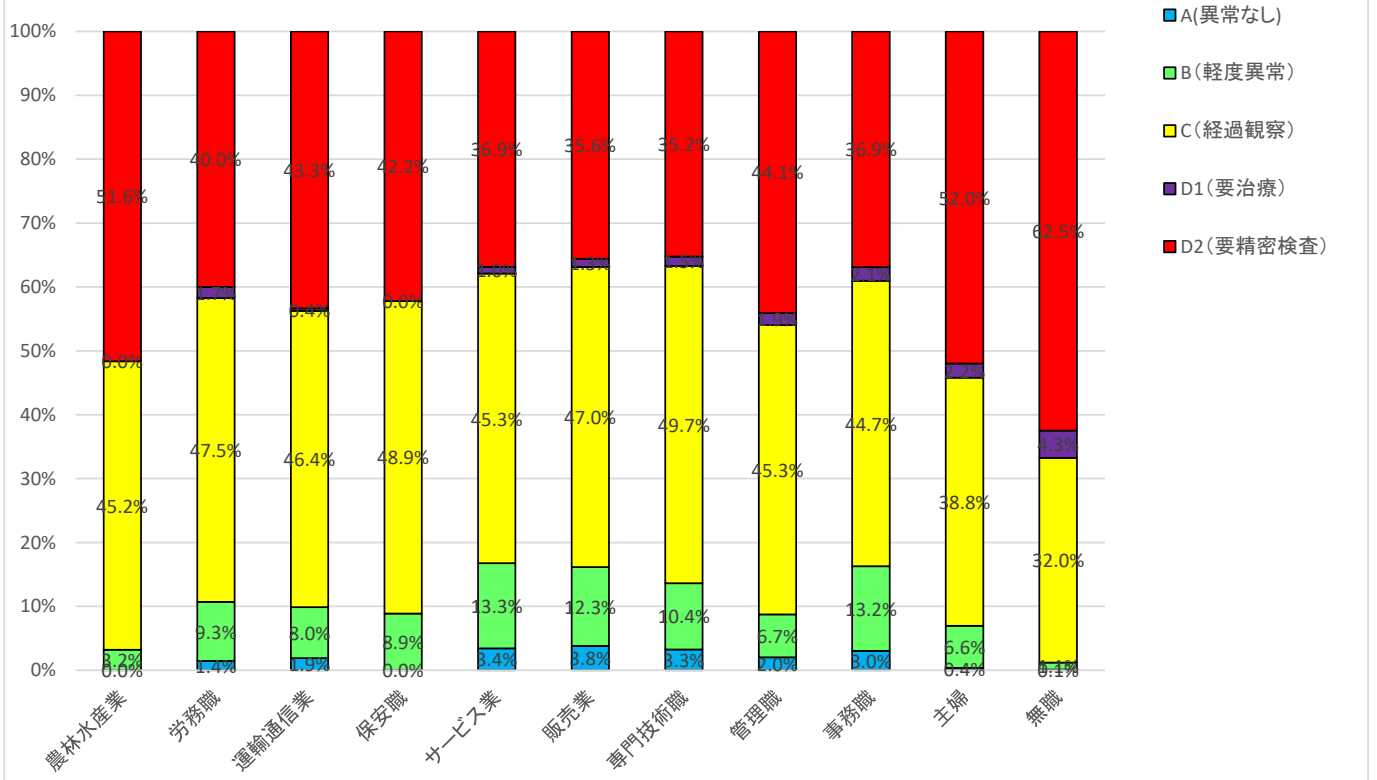
⑰腹部超音波検査



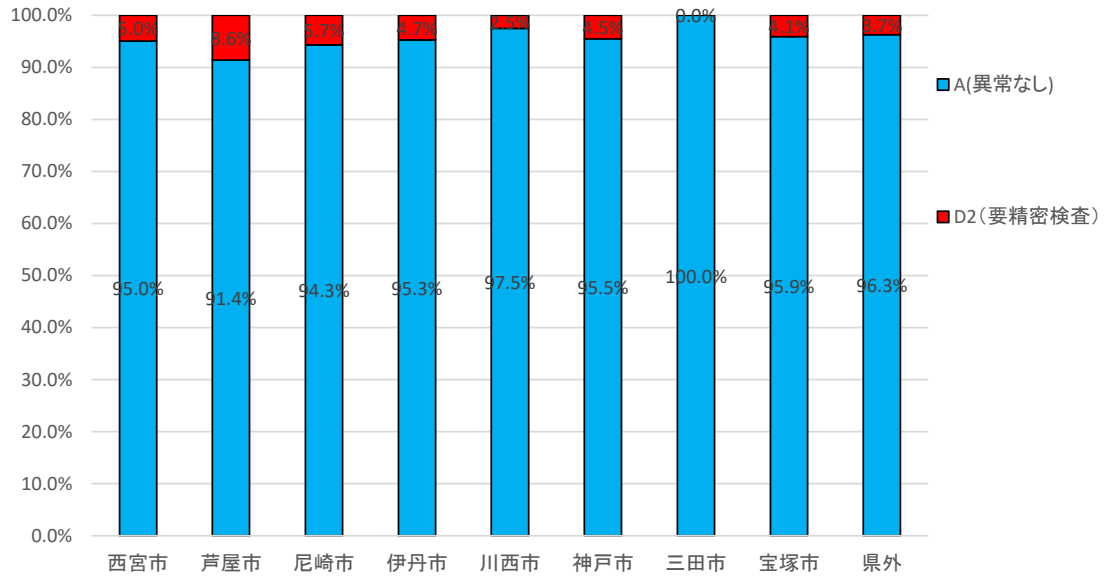
他市との総合判定比較



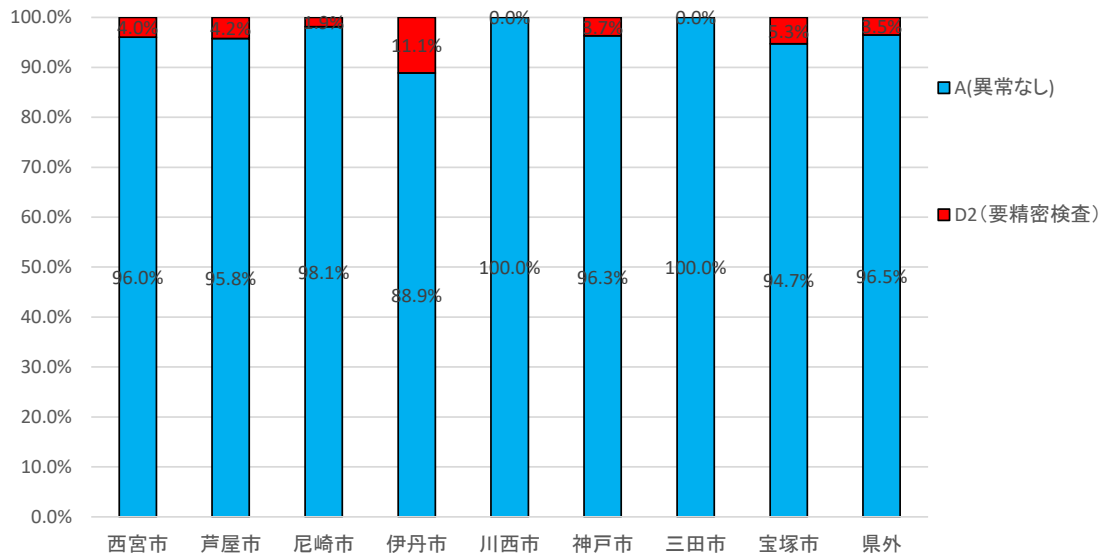
職域別総合判定比較表



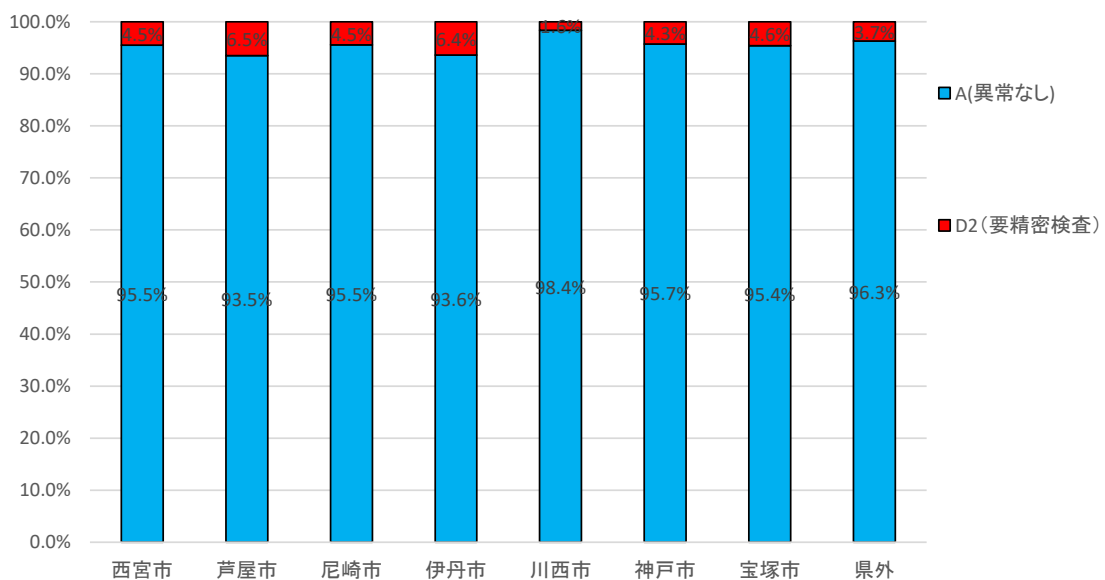
地域別便潜血反応判定比較表(男性)



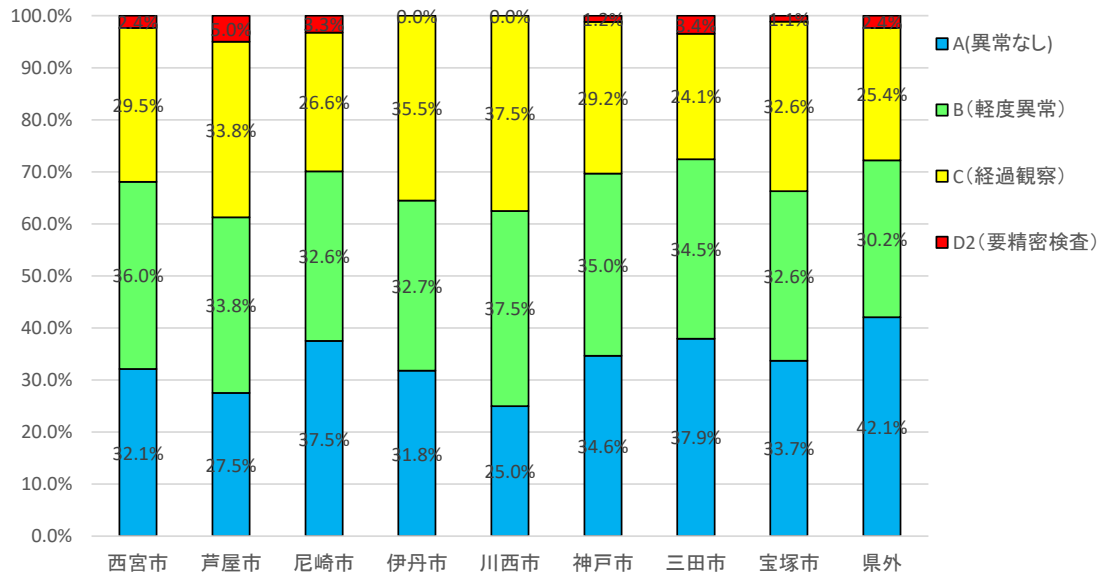
地域別便潜血反応判定比較表(女性)



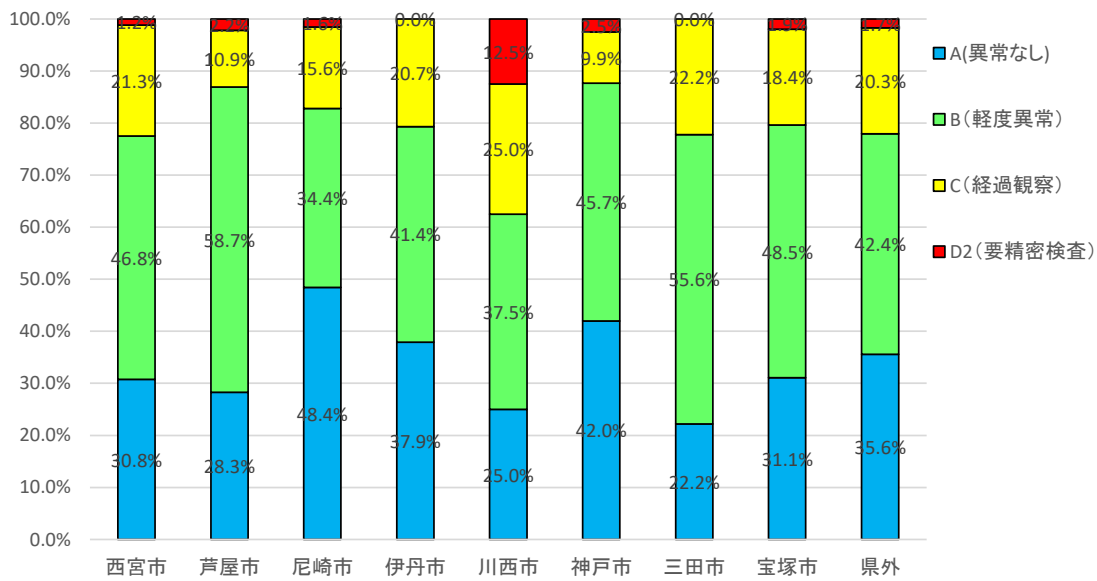
地域別便潜血反応判定比較表(全体)



地域別胃部X線判定比較表(男性)



地域別胃部X線判定比較表(女性)



地域別胃部X線判定比較表(全体)

